

General

Productgroup	PowerOne THR
Mounting type	THR
Material	Brass
Surface	tin-plated +
Customs tariff number	85369095
Country of origin	Federal Republic of Germany
Weight per piecs ~	0.003000 kg

Technical data

Terminal / Type	Bolt / Metric
Thread/Diameter x Length	4.000 mm x 6.00 mm
Torque	1.20 Nm

Socket length x Socket width	9.000 mm x 9.00 mm
Socket height	3.00 mm
Socket rounded	no
Height total	12.00 mm
Height over pcb	9.00 mm
No. of Pins	9
Pin length	2.50 mm
Grid dimension X / Y	3.81 mm / 3.81 mm
Pin alignment	Full plain

Processing

PCB thickness	1.60 mm up to 3.20 mm
Notice	

Current carrying capacity

Part (20 °C) ~ / (85 °C) ~	135.000 A / 81.000 A
----------------------------	----------------------

Usage and storage

Temperature	-40 °C up to +150 °C
Storage	dry environment protected from weather conditions
Storage conditions	at +5 °C up to +40 °C, 75% RH, non-condensing

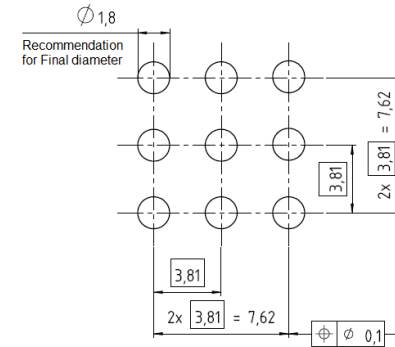
Accessories

Press in tool

Co-applicable documents

Powerelement Guidelines	Link to Powerelement Guidelines
-------------------------	---------------------------------

Standard drill pattern

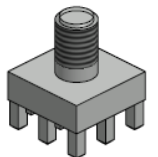
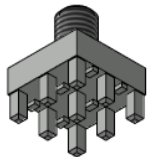
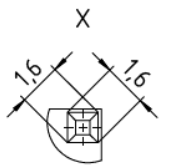
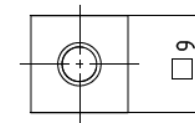
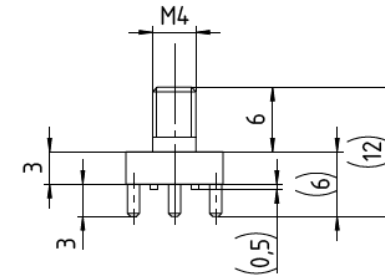
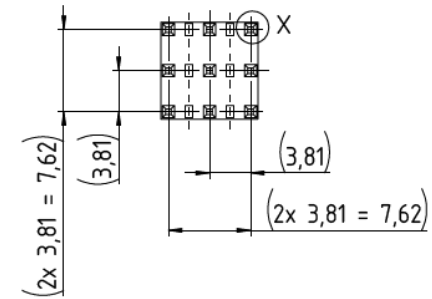


Drill hole specification for PCB

Cu		Cu – in Hole	Average min. 25 µm *
End Ø		HAL chem. surfaces	(1,800 mm +0,1 / -0,05 mm) (1,800 mm +0,1 / -0,05 mm)
Note:	For Press-fit Technology drill diameter and copper thickness are fix. End Ø for reference only.		

* single measurement points in microsection

Dimensions



**WÜRTH
ELEKTRONIK**
MORE THAN
YOU EXPECT

Würth Elektronik ICS GmbH & Co. KG
Würthstraße 1 74676 Niedernhall, Germany
P +49 7940 9810-4444 powerelement@we-online.de
www.powerelement.com

Observe protective note ISO 16016. Passing on or duplication without previous written agreement forbidden. Violations oblige to compensation. All rights reserved in the event of a patent or utility model protection. Subject to change without notice! Is NOT subject to change service!

General tolerances

DIN ISO 2768-mH

Projection mode



Revision

A

Date

03.07.25

All measures in

mm

Part no.

K902648

Description

PowerOne THR Bolt



**REACH
COMPLIANT**



**RoHS
COMPLIANT**