

General

Productgroup	PowerOne THR
Mounting type	THR
Material	Brass
Surface	tin-plated +
Customs tariff number	85369095
Country of origin	
Weight per piecs ~	0.004430 kg

Technical data

Terminal / Type	blind hole / Metric
Thread/Diameter x Length	5.000 mm x 4.00 mm
Torque	2.20 Nm

Socket length x Socket width	9.000 mm x 9.00 mm
Socket height	7.00 mm
Socket rounded	no
Height total	10.00 mm
Height over pcb	7.00 mm
No. of Pins	9
Pin length	2.50 mm
Grid dimension X / Y	3.81 mm / 3.81 mm
Pin alignment	Full plain

Processing

PCB thickness	1.60 mm up to 3.20 mm
Notice	

Current carrying capacity

Part (20°C) ~ / (85°C) ~	135.000 A / 81.000 A
--------------------------	----------------------

Usage and storage

Temperature	-40°C up to +150°C
Storage	dry environment protected from weather conditions
Storage conditions	at +5°C up to +40°C, 75% RH, non-condensing

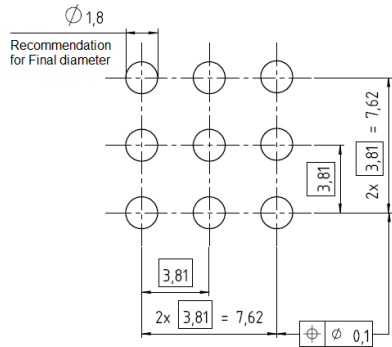
Accessories

Press in tool	
---------------	--

Co-applicable documents

Powerelement Guidelines	Link to Powerelement Guidelines
-------------------------	---------------------------------

Standard drill pattern

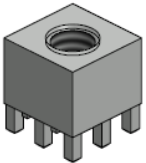
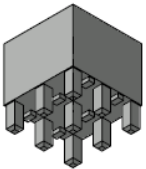
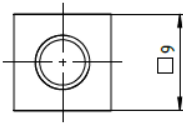
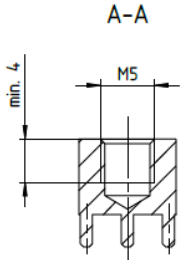
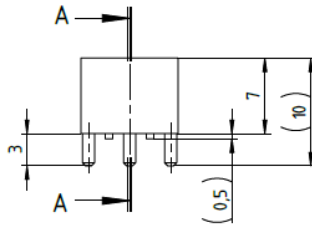
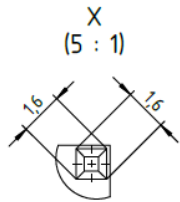
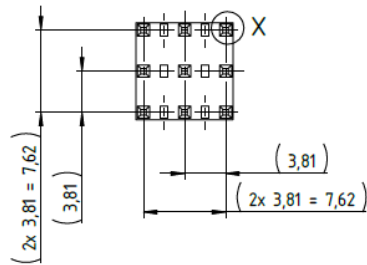


Drill hole specification for PCB

Cu		Cu – in Hole	Average min. 25 µm *
End Ø		HAL chem. surfaces	(1,800 mm +0,1 / -0,05 mm) (1,800 mm +0,1 / -0,05 mm)
Note:	For Press-fit Technology drill diameter and copper thickness are fix. End Ø for reference only.		

* single measurement points in microsection

Dimensions



WÜRTH
ELEKTRONIK
MORE THAN
YOU EXPECT

Würth Elektronik ICS GmbH & Co. KG
Würthstraße 1 74676 Niedernhall, Germany
P +49 7940 9810-4444 powerelement@we-online.de
www.powerelement.com

Observe protective note ISO 16016. Passing on or duplication without previous written agreement forbidden. Violations oblige to compensation. All rights reserved in the event of a patent or utility model protection. Subject to change without notice! Is NOT subject to change service!

General tolerances
DIN ISO 2768-mH

Projection mode



Revision	Date	All measures in
B	29.08.25	mm

Part no.

K902651

Description

PowerOne THR Bush vertical blind hole



REACH
COMPLIANT



RoHS
COMPLIANT