

### General

Productgroup	PowerTwo
Mounting type	Pressfit Techn
Material	Brass
Surface	tin
Customs tariff number	85369095
Country of origin	Federal Republic of Germany
Weight per piecs ~	0.002450 kg

### Technical data

Terminal / Type	Bush through hole / Metric
Thread/Diameter x Length	6.000 mm x 8.40 mm
Torque	3.90 Nm

Pressure plate length x width	12.000 mm x 0.00 mm
Pressure plate height	2.00 mm
Height total	8.40 mm
Pin length	6.40 mm
Pin alignment	knurl
Push in area for diameter	7.30 mm
Push in length	2.90 mm up to 6.40 mm

### Processing

Notice

### Usage and storage

Temperature	-40°C up to +150°C
Storage	dry environment protected from weather conditions
Storage conditions	at +5°C up to +40°C, 75% RH, non-condensing

### Accessories

Press in tool	Press-Fit Pin
---------------	---------------

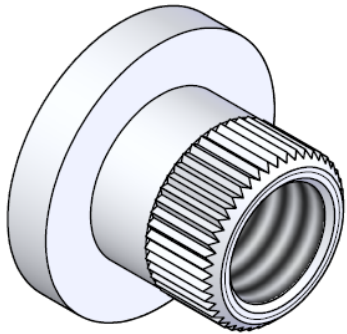
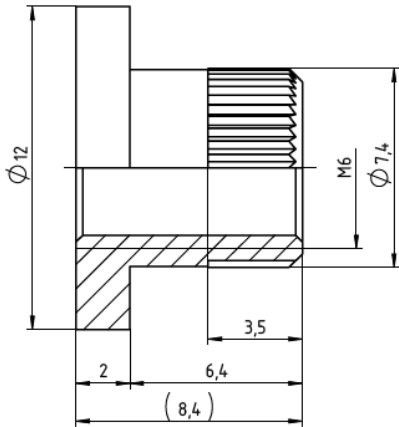
### Co-applicable documents

Powerelement Guidelines	Link to Powerelement Guidelines
-------------------------	---------------------------------

### Standard drill pattern

### Drill hole specification for PCB

### Dimensions



**WÜRTH  
ELEKTRONIK**  
MORE THAN  
YOU EXPECT

Würth Elektronik ICS GmbH & Co. KG  
Würthstraße 1 74676 Niedernhall, Germany  
P +49 7940 9810-4444 powerelement@we-online.de  
www.powerelement.com

Observe protective note ISO 16016. Passing on or duplication without previous written agreement forbidden. Violations oblige to compensation. All rights reserved in the event of a patent or utility model protection. Subject to change without notice! Is NOT subject to change service!

General tolerances  
DIN ISO 2768-mH

Projection mode



Revision	Date	All measures in
E	10.07.25	mm

Part no.

**K91126**

Description

**PowerTwo Bush M6 for a 12mm Basic  
Element Ø7.25**



REACH  
COMPLIANT



RoHS  
COMPLIANT