

### General

Productgroup	PowerTwo
Mounting type	Pressfit Techn
Material	Brass
Surface	tin
Customs tariff number	85369095
Country of origin	Federal Republic of Germany
Weight per piecs ~	0.002660 kg

### Technical data

Terminal / Type	Bush through hole / Diameter
Thread/Diameter x Length	6.400 mm x 0.00 mm
Torque	0.00 Nm

Pressure plate length x width	13.000 mm x 13.00 mm
Pressure plate height	2.00 mm
Height total	8.40 mm
Pin length	6.40 mm
Pin alignment	knurl
Push in area for diameter	7.30 mm
Push in length	2.90 mm up to 6.40 mm

### Processing

Notice

### Usage and storage

Temperature	-40°C up to +150°C
Storage	dry environment protected from weather conditions
Storage conditions	at +5°C up to +40°C, 75% RH, non-condensing

### Packaging

packaging quantity	500.000 pcs
--------------------	-------------

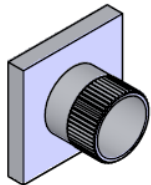
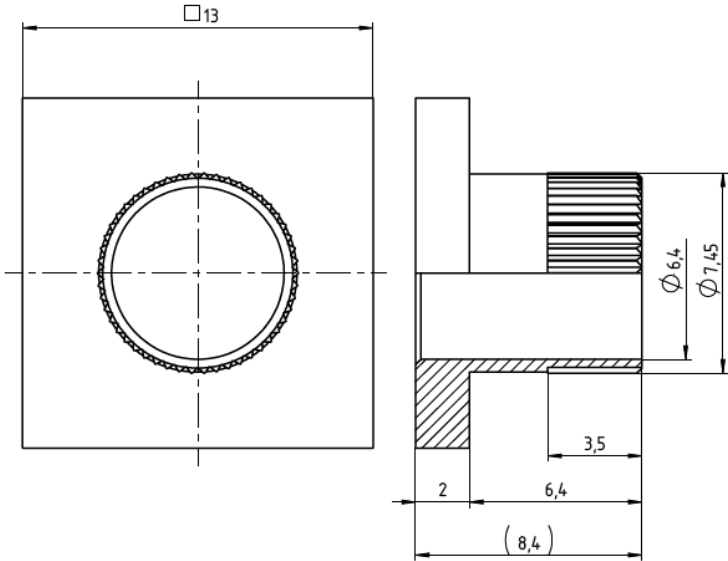
### Accessories

Press in tool

### Standard drill pattern

### Drill hole specification for PCB

### Dimensions



**WÜRTH  
ELEKTRONIK**  
MORE THAN  
YOU EXPECT

Würth Elektronik ICS GmbH & Co. KG  
Würthstraße 1 74676 Niedernhall, Germany  
P +49 7940 9810-4444 powerelement@we-online.de  
www.powerelement.com

Observe protective note ISO 16016. Passing on or duplication without previous written agreement forbidden. Violations oblige to compensation. All rights reserved in the event of a patent or utility model protection. Subject to change without notice! Is NOT subject to change service!

General tolerances  
DIN ISO 2768-mH

Revision	Date
C	23.06.25

Projection mode



All measures in  
mm

Part no.

**K94371**

Description

**PowerTwo Bush Ø6.40 for a 13mm  
Basic Element Ø7.30**



**REACH  
COMPLIANT**



**RoHS  
COMPLIANT**