

General

Productgroup	PowerOne SMD
Mounting type	SMT
Material	Brass
Surface	tin-plated +
Customs tariff number	85369095
Country of origin	Federal Republic of Germany
Weight per piecs ~	0.004670 kg

Technical data

Terminal / Type	blind hole / Metric
Thread/Diameter x Length	4.000 mm x 4.00 mm
Torque	1.20 Nm

Socket length x Socket width	9.000 mm x 9.00 mm
Socket height	7.50 mm
Socket rounded	no
Height total	7.50 mm
Height over pcb	7.50 mm

Processing

PCB thickness	min. 1.00 mm
Recommendation Solder cream thickness	150 µm
Notice	

Current carrying capacity

Part (20°C) ~ / (85°C) ~	120.000 A / 72.000 A
--------------------------	----------------------

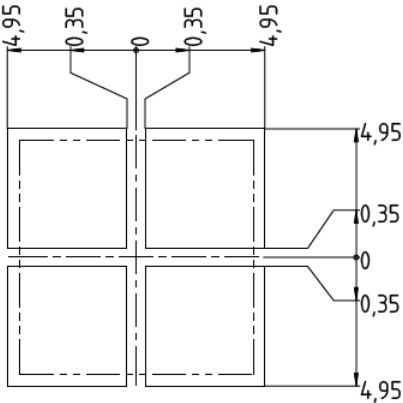
Usage and storage

Temperature	-40°C up to +150°C
Storage	dry environment protected from weather conditions
Storage conditions	at +5°C up to +40°C, 75% RH, non-condensing

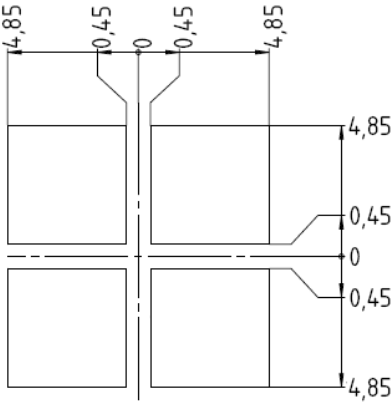
Co-applicable documents

Powerelement Guidelines	Link to Powerelement Guidelines
-------------------------	---------------------------------

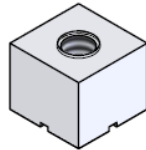
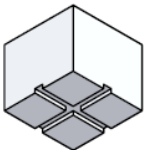
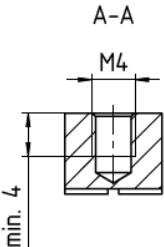
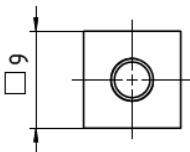
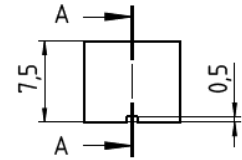
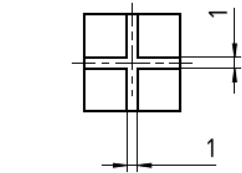
Solder pad recommendation



Stencil design recommendation



Dimensions



WÜRTH
ELEKTRONIK
MORE THAN
YOU EXPECT

Würth Elektronik ICS GmbH & Co. KG
Würthstraße 1 74676 Niedernhall, Germany
P +49 7940 9810-4444 powerelement@we-online.de
www.powerelement.com

Observe protective note ISO 16016. Passing on or duplication without previous written agreement forbidden. Violations oblige to compensation. All rights reserved in the event of a patent or utility model protection. Subject to change without notice! Is NOT subject to change service!

General tolerances
DIN ISO 2768-mH

Projection mode



Revision	Date	All measures in
C	03.07.25	mm

Part no.

K97871

Description

PowerOne SMD Bush vertical blind hole



REACH
COMPLIANT



RoHS
COMPLIANT