

General

Productgroup	LF PowerBasket
Mounting type	SMT
Material	High performance alloy
Surface	silver
Customs tariff number	85369095
Country of origin	Federal Republic of Germany
Weight per piece ~	0.002000 kg

Technical data

Terminal / Type	Bush through hole / Diameter
Diameter	6.000 mm
Socket diameter	16.000 mm
Socket height	0.70 mm
Height total	11.25 mm
Height over pcb	0.70 mm
No. of Pins	8
Pin length	0.00 mm
Pin alignment	Circumference

Processing

Press-in speed for press-fit types	0 up to 0
PCB thickness for SMT types	min. 1.00 mm
PCB thickness for press-fit types	1,60 up to 3,20 mm
Notice	

Current carrying capacity

Part (20°C) ~ / (85°C) ~	164.000 A / 121.000 A
--------------------------	-----------------------

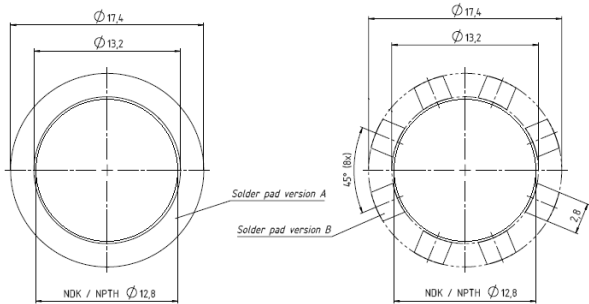
Usage and storage

Temperature	-40°C up to +150°C
Storage	dry environment protected from weather conditions
Storage conditions	at +5°C up to +40°C, 75% RH, non-condensing

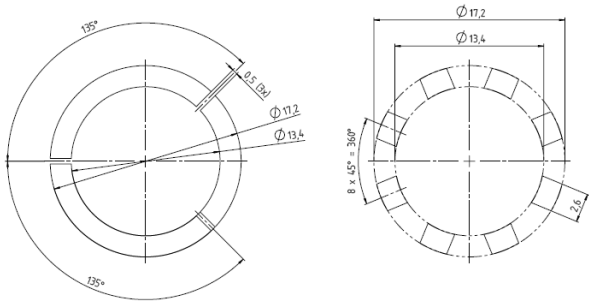
Co-applicable documents

Powerelement Guidelines	Link to Powerelement Guidelines
-------------------------	---------------------------------

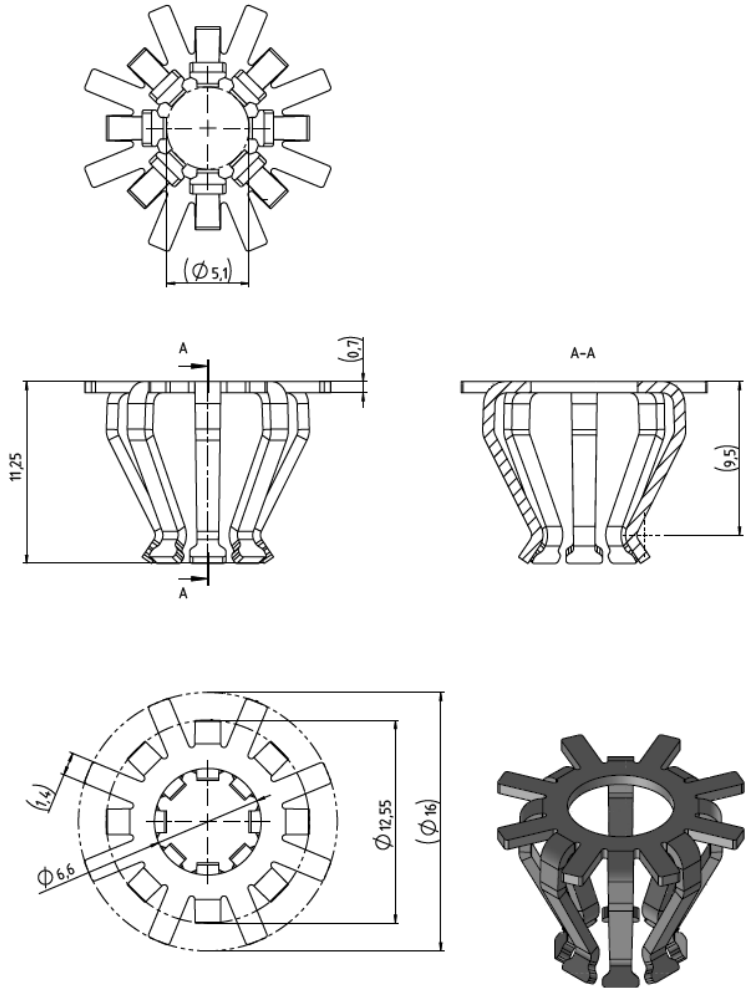
Footprint recommendation



Drill hole specification for PCB or recommendation mask design



Dimensions



**WÜRTH
ELEKTRONIK**
MORE THAN
YOU EXPECT

Würth Elektronik ICS GmbH & Co. KG
Würthstraße 1 74676 Niedernhall, Germany
P +49 7940 9810-4444 lf-powerelement@we-online.de
www.lf-powerelements.com

Observe protective note ISO 16016. Passing on or duplication without previous written agreement forbidden. Violations oblige to compensation. All rights reserved in the event of a patent or utility model protection. Subject to change without notice! Is NOT subject to change service!

General tolerances
DIN ISO 2768-mH

Projection mode

Revision	Date	All measures in
C	10.07.25	mm

Part no.

K99600

Description

**LF PowerBasket SMD Bush vertical
through hole**

