

General

Productgroup	LF PowerOne
Mounting type	Massive Pressfit Techn
Material	Brass lead-free (max. 0.1% Pb)
Surface	tin
Customs tariff number	85369095
Country of origin	Federal Republic of Germany
Weight per pieces ~	0.010680 kg

Technical data

Terminal / Type	Bush through hole / Metric
Thread/Diameter x Length	6.000 mm x 8.00 mm
Torque	3.90 Nm
Socket length x Socket width	13.000 mm x 13.00 mm
Socket height	8.00 mm
Socket rounded	yes
Height total	11.50 mm
Height over pcb	8.00 mm
No. of Pins	16
Pin length	3.50 mm
Grid dimension X / Y	2.54 mm / 2.54 mm
Pin alignment	Circumference with hole

Processing

Press in force	960 N up to 4000 N
Retention force	60-80 % of press-in force
Press-in speed	100 mm/min. up to 250 mm/min.
PCB thickness	1.60 mm up to 3.20 mm
Notice	

Current carrying capacity

Part (20°C) ~ / (85°C) ~	240.000 A / 144.000 A
--------------------------	-----------------------

Usage and storage

Temperature	-40°C up to +150°C
Storage	dry environment protected from weather conditions
Storage conditions	at +5°C up to +40°C, 75% RH, non-condensing

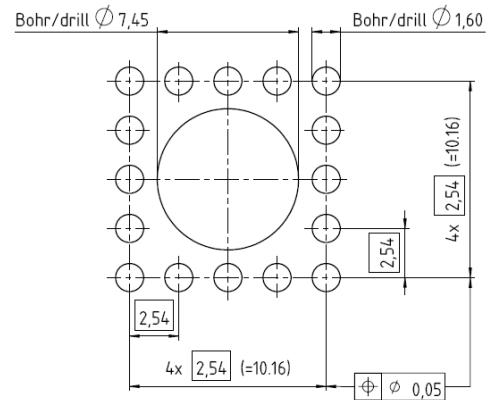
Accessories

Press in tool	
---------------	--

Co-applicable documents

Powerelement Guidelines	Link to Powerelement Guidelines
-------------------------	---------------------------------

Standard drill pattern



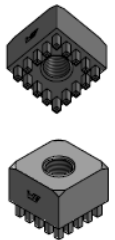
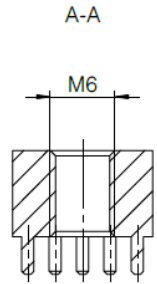
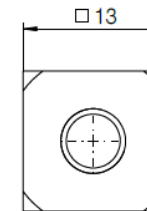
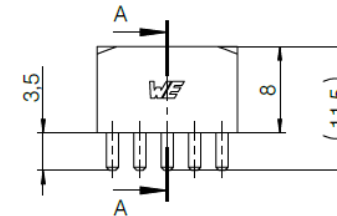
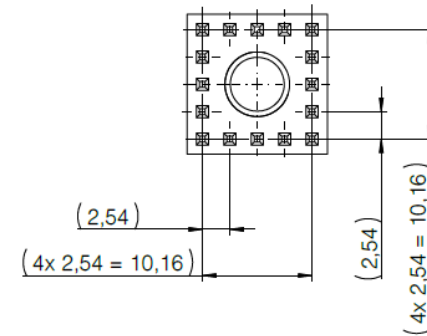
Drill hole specification for PCB

Drill Ø		drill tool	1,60 mm
		drill hole	1,60 mm - 0,025 mm
Cu		Cu - in Hole	Average 30 µm - 60 µm min. 25 µm, max. 80 µm *
End Ø		HAL	(1,450 mm +/- 0,05 mm)
		chem. surfaces	(1,475 mm +/- 0,05 mm)

Note: For Press-fit Technology drill diameter and copper thickness are fix. End Ø for reference only.

* single measurement points in microsection

Dimensions



**WÜRTH
ELEKTRONIK**
MORE THAN
YOU EXPECT

Würth Elektronik ICS GmbH & Co. KG
Würthstraße 1 74676 Niedernhall, Germany
P +49 7940 9810-4444 lf-powerelement@we-online.de
www.lf-powerelements.com

Observe protective note ISO 16016. Passing on or duplication without previous written agreement forbidden. Violations oblige to compensation. All rights reserved in the event of a patent or utility model protection. Subject to change without notice! Is NOT subject to change service!

General tolerances
DIN ISO 2768-mH

Projection mode



Revision	Date	All measures in
B	14.11.25	mm

Part no.

LF991106

Description

**LF PowerOne Bush vertical through
hole**

