

General

Productgroup	LF PowerTwo
Mounting type	Pressfit Techn
Material	Brass lead-free (max. 0.1% Pb)
Surface	tin
Customs tariff number	85369095
Country of origin	Federal Republic of Germany
Weight per piecs ~	0.003950 kg

Technical data

Terminal / Type	Bolt / Metric
Thread/Diameter x Length	4.000 mm x 6.00 mm
Torque	1.20 Nm
Pressure plate length x width	10.000 mm x 10.00 mm
Pressure plate height	2.00 mm
Height total	14.40 mm
Pin length	6.40 mm
Pin alignment	knurl
Push in area for diameter	6.20 mm
Push in length	3.50 mm up to 6.40 mm

Processing

Notice

Usage and storage

Temperature	-40°C up to +150°C
Storage	dry environment protected from weather conditions
Storage conditions	at +5°C up to +40°C, 75% RH, non-condensing

Accessories

Press in tool

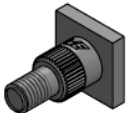
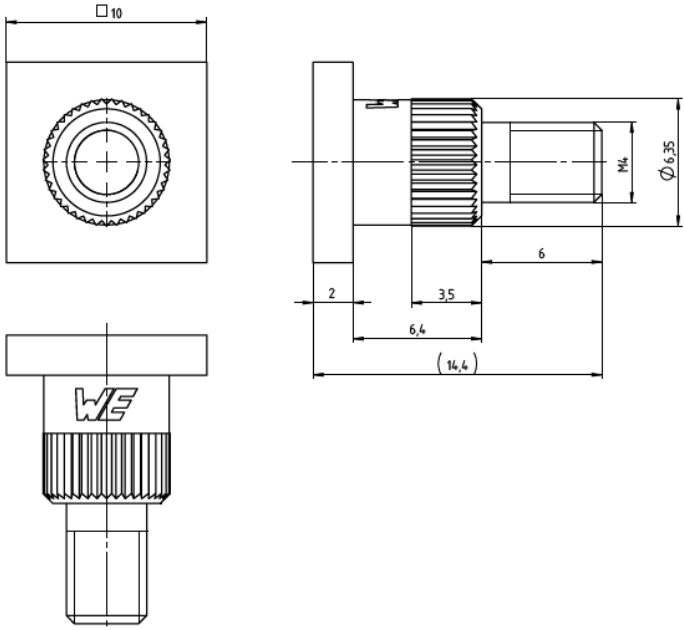
Co-applicable documents

Powerelement Guidelines	<a href="#">Link to Powerelement Guidelines</a>
-------------------------	---

Standard drill pattern

Drill hole specification for PCB

Dimensions



**WÜRTH  
ELEKTRONIK**  
MORE THAN  
YOU EXPECT

Würth Elektronik ICS GmbH & Co. KG  
Würthstraße 1 74676 Niedernhall, Germany  
P +49 7940 9810-4444 lf-powerelement@we-online.de  
[www.lf-powerelements.com](http://www.lf-powerelements.com)

Observe protective note ISO 16016. Passing on or duplication without previous written agreement forbidden. Violations oblige to compensation. All rights reserved in the event of a patent or utility model protection. Subject to change without notice! Is NOT subject to change service!

General tolerances  
DIN ISO 2768-mH

Projection mode

Revision	Date	All measures in
C	12.08.25	mm

Part no.

**LF991204**

Description

**LF PowerTwo Bolt M4x6 for a 10mm  
Basic Element Ø6.20**



**RoHS  
COMPLIANT**  
**LEAD-FREE**  
Pb < 0,1 %