

### General

Productgroup	LF PowerOne SMD
Mounting type	SMT
Material	Brass lead-free (max. 0.1% Pb)
Surface	tin
Customs tariff number	
Country of origin	Federal Republic of Germany
Weight per pieces ~	0.011440 kg

### Technical data

Terminal / Type	blind hole / Metric
Thread/Diameter x Length	8.000 mm x 10.00 mm
Torque	9.00 Nm

Socket diameter	13.000 mm
Socket height	13.50 mm
Height total	13.50 mm

### Processing

PCB thickness	min. 1.00 mm
Recommendation Solder cream thickness	150 µm
Notice	

### Current carrying capacity

Part (20°C) ~ / (85°C) ~	290.000 A / 174.000 A
--------------------------	-----------------------

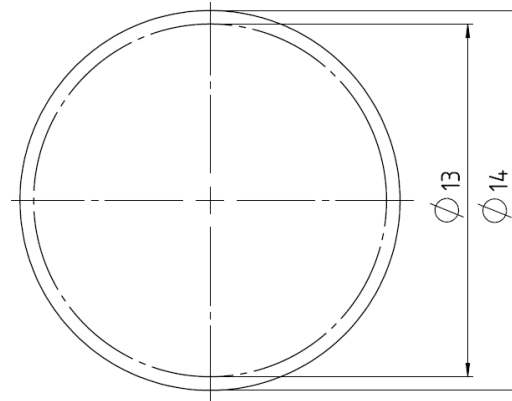
### Usage and storage

Temperature	-40°C up to +150°C
Storage	dry environment protected from weather conditions
Storage conditions	at +5°C up to +40°C, 75% RH, non-condensing

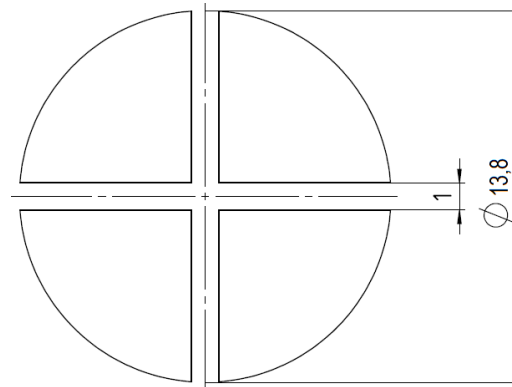
### Co-applicable documents

Powerelement Guidelines	Link to Powerelement Guidelines
-------------------------	---------------------------------

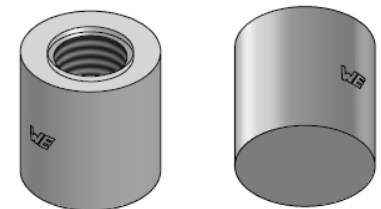
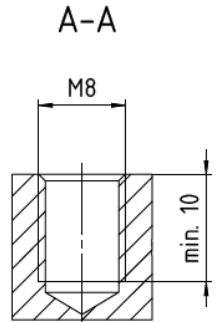
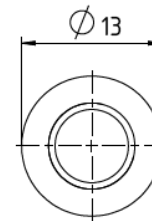
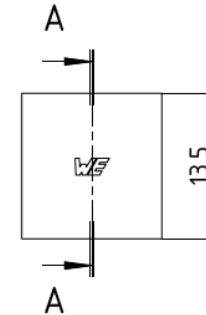
### Solder pad recommendation



### Stencil design recommendation



### Dimensions



**WÜRTH  
ELEKTRONIK**  
MORE THAN  
YOU EXPECT

Würth Elektronik ICS GmbH & Co. KG  
Würthstraße 1 74676 Niedernhall, Germany  
P +49 7940 9810-4444 lf-powerelement@we-online.de  
www.lf-powerelements.com

Observe protective note ISO 16016. Passing on or duplication without previous written agreement forbidden. Violations oblige to compensation. All rights reserved in the event of a patent or utility model protection. Subject to change without notice! Is NOT subject to change service!

General tolerances  
DIN ISO 2768-mH

Projection mode



Revision	Date	All measures in
B	16.07.25	mm

Part no.

**LF992008**

Description

**LF PowerOne SMD Bush vertical blind  
hole**

