

## General

Productgroup	LF PowerOne SMD
Mounting type	SMT
Material	Brass lead-free (max. 0.1% Pb)
Surface	tin
Customs tariff number	85369095
Country of origin	Federal Republic of Germany
Weight per piece ~	0.006000 kg

## Technical data

Terminal / Type	Bush through hole / Metric
Thread/Diameter x Length	6.000 mm x 7.00 mm
Torque	3.90 Nm

Socket diameter	13.000 mm
Socket height	6.00 mm
Height total	7.00 mm
Height over pcb	6.00 mm
No. of Pins	1
Pin length	1.00 mm
Pin alignment	Centering

## Processing

PCB thickness	min. 1.00 mm
Recommendation Solder cream thickness	150 µm
Notice	

## Current carrying capacity

Part (20°C) ~ / (85°C) ~	210.000 A / 126.000 A
--------------------------	-----------------------

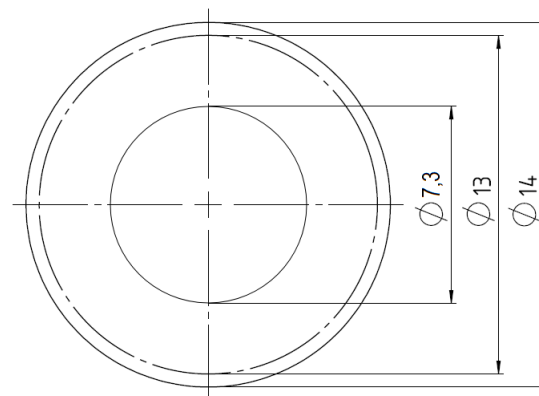
## Usage and storage

Temperature	-40°C up to +150°C
Storage	dry environment protected from weather conditions
Storage conditions	at +5°C up to +40°C, 75% RH, non-condensing

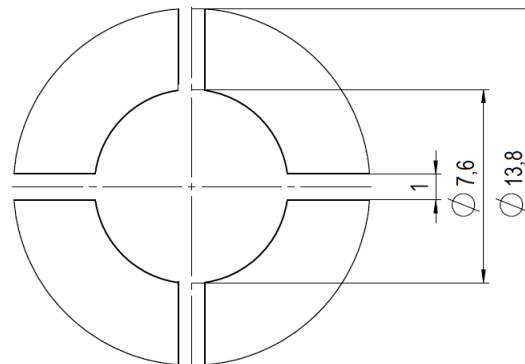
## Co-applicable documents

Powerelement Guidelines	<a href="#">Link to Powerelement Guidelines</a>
-------------------------	-------------------------------------------------

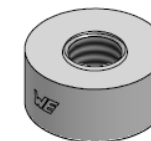
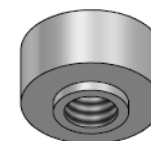
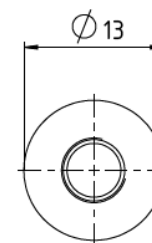
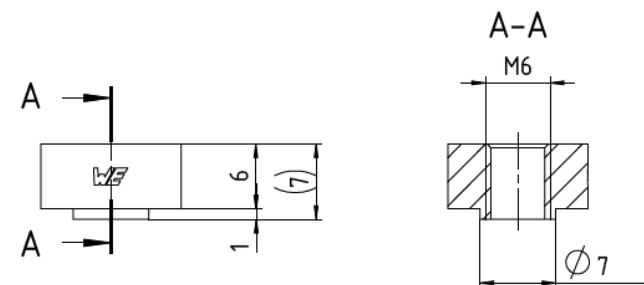
## Solder pad recommendation



## Stencil design recommendation



## Dimensions



**WÜRTH  
ELEKTRONIK**  
MORE THAN  
YOU EXPECT

Würth Elektronik ICS GmbH & Co. KG  
Würthstraße 1 74676 Niedernhall, Germany  
P +49 7940 9810-4444 lf-powerelement@we-online.de  
[www.lf-powerelements.com](http://www.lf-powerelements.com)

Observe protective note ISO 16016. Passing on or duplication without previous written agreement forbidden. Violations oblige to compensation. All rights reserved in the event of a patent or utility model protection. Subject to change without notice! Is NOT subject to change service!

## General tolerances

DIN ISO 2768-mH

## Projection mode



Revision	Date	All measures in
B	17.07.25	mm

## Part no.

**LF994006**

## Description

**LF PowerOne SMD Bush vertical  
through hole with centering**

