

General

Productgroup	LF PowerOne SMD
Mounting type	SMT
Material	Brass lead-free (max. 0.1% Pb)
Surface	tin-plated +
Customs tariff number	85369095
Country of origin	Federal Republic of Germany
Weight per pieces ~	0.003900 kg

Technical data

Terminal / Type	Bush through hole / Metric
Thread/Diameter x Length	6.000 mm x 6.00 mm
Torque	3.90 Nm

Socket diameter	13.000 mm
Socket height	3.00 mm
Height total	6.00 mm
Height over pcb	3.00 mm
No. of Pins	1
Pin length	3.00 mm
Pin alignment	Centering

Processing

PCB thickness	min. 1.00 mm
Recommendation Solder cream thickness	150 μm
Notice	

Current carrying capacity

Part (20°C) ~ / (85°C) ~ 150.000 A / 90.000 A

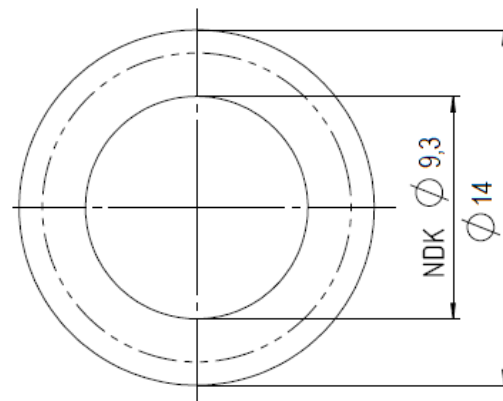
Usage and storage

Temperature	-40°C up to +150°C
Storage	dry environment protected from weather conditions
Storage conditions	at +5°C up to +40°C, 75% RH, non-condensing

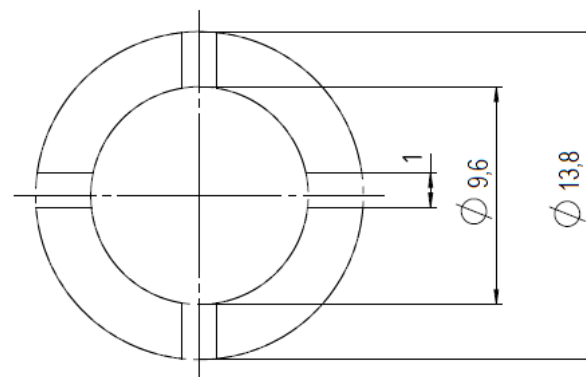
Co-applicable documents

Powerelement Guidelines [Link to Powerelement Guidelines](#)

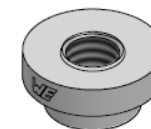
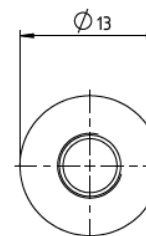
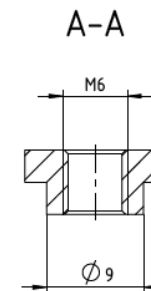
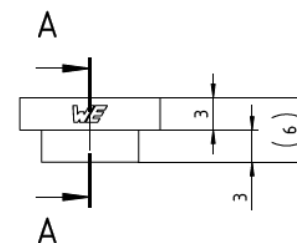
Solder pad recommendation



Stencil design recommendation



Dimensions



**WÜRTH
ELEKTRONIK**
MORE THAN
YOU EXPECT

Würth Elektronik ICS GmbH & Co. KG
Würthstraße 1 74676 Niedernhall, Germany
P +49 7940 9810-4444 lf-powerelement@we-online.de
www.lf-powerelements.com

Observe protective note ISO 16016. Passing on or duplication without previous written agreement forbidden. Violations oblige to compensation. All rights reserved in the event of a patent or utility model protection. Subject to change without notice! Is NOT subject to change service!

General tolerances

DIN ISO 2768-mH

Projection mode



Revison

B

Date _____

17.07.25

All measures in

mm

Part no.

LF995006

Description

**LF PowerOne SMD Bush vertical
through hole double-sided**

