

General

Productgroup	LF PowerOne SMD
Mounting type	SMT
Material	Brass lead-free (max. 0.1% Pb)
Surface	tin
Customs tariff number	85369095
Country of origin	Federal Republic of Germany
Weight per piece ~	0.003110 kg

Technical data

Terminal / Type	Bush through hole / Diameter
Thread/Diameter x Length	5.800 mm x 0.00 mm
Torque	0.00 Nm

Socket diameter	12.000 mm
Socket height	3.00 mm
Height total	6.00 mm
Height over pcb	3.00 mm
No. of Pins	1
Pin length	3.00 mm
Pin alignment	double-sided

Processing

PCB thickness	min. 1.00 mm
Recommendation Solder cream thickness	150 µm
Notice	

Current carrying capacity

Part (20°C) ~ / (85°C) ~	105.000 A / 63.000 A
--------------------------	----------------------

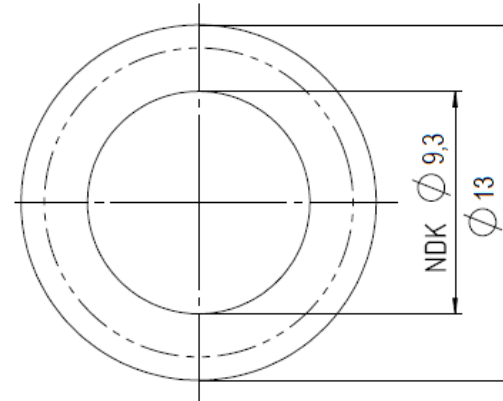
Usage and storage

Temperature	-40°C up to +150°C
Storage	dry environment protected from weather conditions
Storage conditions	at +5°C up to +40°C, 75% RH, non-condensing

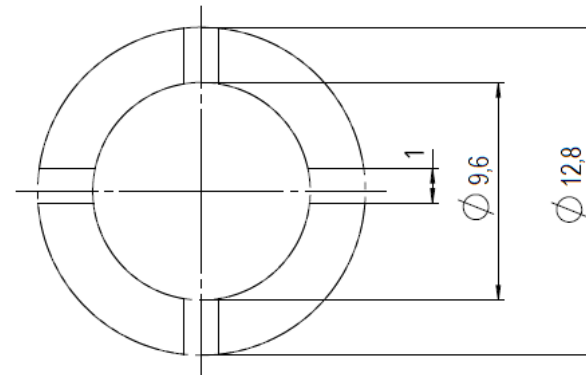
Co-applicable documents

Powerelement Guidelines	Link to Powerelement Guidelines
-------------------------	---------------------------------

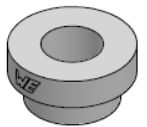
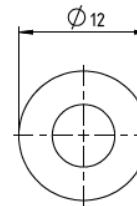
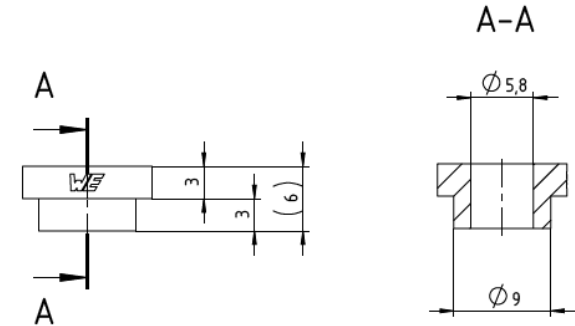
Solder pad recommendation



Stencil design recommendation



Dimensions



**WÜRTH
ELEKTRONIK**
MORE THAN
YOU EXPECT

Würth Elektronik ICS GmbH & Co. KG
Würthstraße 1 74676 Niedernhall, Germany
P +49 7940 9810-4444 lf-powerelement@we-online.de
www.lf-powerelements.com

Observe protective note ISO 16016. Passing on or duplication without previous written agreement forbidden. Violations oblige to compensation. All rights reserved in the event of a patent or utility model protection. Subject to change without notice! Is NOT subject to change service!

General tolerances
DIN ISO 2768-mH

Projection mode



Revision	Date	All measures in
C	17.07.25	mm

Part no.

LF996005

Description

**LF PowerOne SMD Bush vertical
through hole double-sided**

