

General

Productgroup	PowerSocket Fuse
Mounting type	Massive Pressfit Techn
Material	Bronze
Surface	tin
Customs tariff number	85366930
Country of origin	Federal Republic of Germany
Weight per piecs ~	0.002880 kg

Technical data

Terminal	blind hole
Socket length x Socket width	20.00 mm x 6.40 mm
Socket height	14.00 mm
Height total	18.00 mm
Height over pcb	14.00 mm
No. of Pins	4
Pin length	4.00 mm
Grid dimension X / Y	2.54 mm / 0.00 mm
Pin alignment	Two row

Processing

Press in force	160 N up to 1000 N
Retention force	60-80 % of press-in force
Press-in speed	100 mm/min. up to 250 mm/min.
PCB thickness	1.60 mm up to 3.20 mm
Notice	

Current carrying capacity

Part (20°C) ~ / (85°C) ~	Depending on component to be contacted
--------------------------	--

Usage and storage

Temperature	-40°C up to +150°C
Storage	dry environment protected from weather conditions
Storage conditions	at +5°C up to +40°C, 75% RH, non-condensing

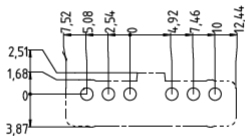
Accessories

Press in tool
---------------

Co-applicable documents

Powerelement Guidelines	Link to Powerelement Guidelines
-------------------------	---------------------------------

Standard drill pattern



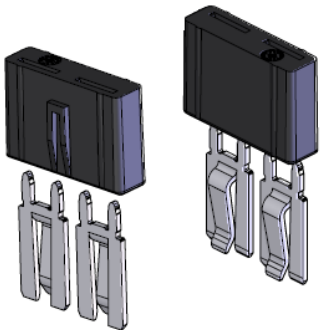
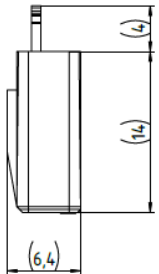
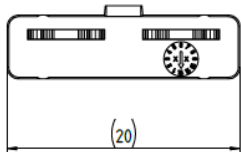
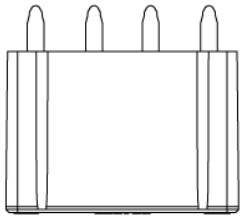
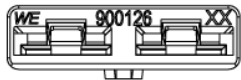
Drill hole specification for PCB

Drill Ø		drill tool	1,60 mm
		drill hole	1,60 mm - 0,025 mm
Cu		Cu – in Hole	Average 30 µm – 60 µm min. 25 µm, max. 80 µm *
End Ø		HAL	(1,450 mm +/- 0,05 mm)
		chem. surfaces	(1,475 mm +/- 0,05 mm)

Note: For Press-fit Technology drill diameter and copper thickness are fix. End Ø for reference only.

\* single measurement points in microsection

Dimensions



WÜRTH  
ELEKTRONIK  
MORE THAN  
YOU EXPECT

Würth Elektronik ICS GmbH & Co. KG  
Würthstraße 1 74676 Niedernhall, Germany  
P +49 7940 9810-4444 powerelement@we-online.de  
www.powerelement.com

Observe protective note ISO 16016. Passing on or duplication without previous written agreement forbidden. Violations oblige to compensation. All rights reserved in the event of a patent or utility model protection. Subject to change without notice! Is NOT subject to change service!

Generaltolerances  
DIN ISO 2768-mH

Revision	Date
B	28.08.25

Projection mode



All measures in  
mm

Part no.

**S900126**

Description

**PowerSocket Fuse ATO®**



REACH  
COMPLIANT



RoHS  
COMPLIANT