

## General

Productgroup	LF PowerPlus
Mounting type	Massive Pressfit Techn
Material	Lead-free Brass
Surface	tin
Customs tariff number	85369095
Country of origin	Federal Republic of Germany
Weight per piecs ~	0.007970 kg

## Technical data

Terminal / Type	Bolt / Metric
Thread/Diameter x Length	6.000 mm x 14.20 mm
Torque	5.90 Nm

Socket length x Socket width	12.400 mm x 12.40 mm
Socket height	10.25 mm
Height total	33.05 mm
Height over pcb	28.05 mm
No. of Pins	12
Pin length	5.00 mm
Grid dimension X / Y	2.80 mm / 2.80 mm
Pin alignment	Circumference

## Processing

Press in force	720 N up to 3000 N
Retention force	60-80 % of press-in force
Press-in speed	100 mm/min. up to 250 mm/min.
PCB thickness	1.60 mm up to 3.20 mm
Notice	

### Current carrying capacity

Part (20°C) ~ / (85°C) ~ 270.000 A / 155.000 A

## Usage and storage

Temperature	-40 °C up to +150 °C
Storage	dry environment protected from weather conditions
Storage conditions	at +5 °C up to +40 °C, 75% RH, non-condensing

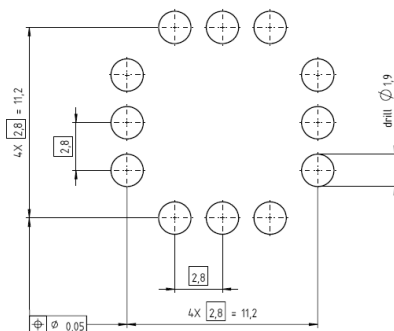
## Accessories

Press in tool Press-Fit tool bush, for PowerPlus 2.0  
bolt M6




### Co-applicable documents

Powerelement Guidelines [Link to Powerelement Guidelines](#)

### Standard drill pattern

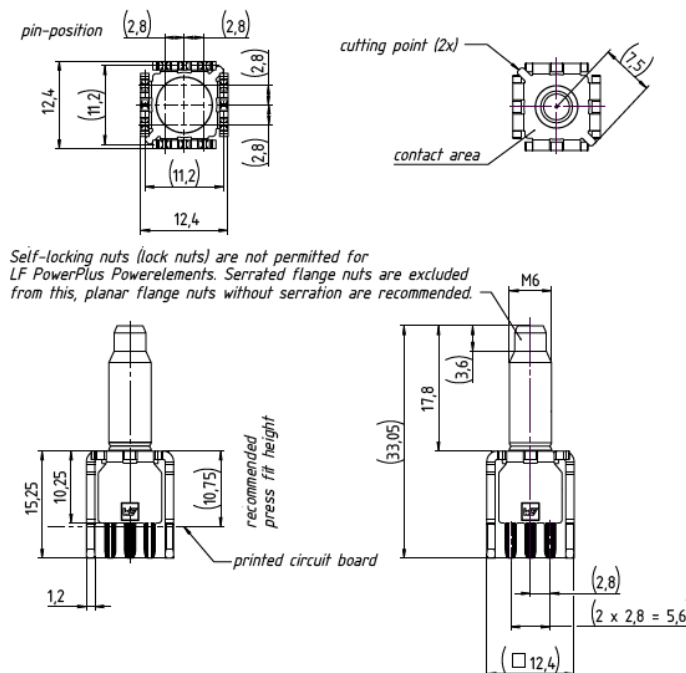


### Drill hole specification for PCB

Drill Ø		drill tool drill hole	1,90 mm 1,90 mm – 0,025 mm
Cu		Cu – in Hole	Average 30 µm – 60 µm min. 25 µm, max. 80 µm *
End Ø		HAL chem. surfaces	(1,750 mm +/- 0,05 mm) (1,775 mm +/- 0,05 mm)
Note:	For Press-fit Technology drill diameter and copper thickness are fix. End Ø for reference only.		

\* single measurement points in microsection

### Dimensions



### Press-fit-tool information



**WÜRTH  
ELEKTRONIK**  
MORE THAN  
YOU EXPECT

Würth Elektronik ICS GmbH & Co. KG  
Würthstraße 1 74676 Niedernhall, Germany  
P +49 7940 9810-4444 lf-powerelement@we-online.de  
[www.lf-powerelements.com](http://www.lf-powerelements.com)

Observe protective note ISO 16016. Passing on or duplication without previous written agreement forbidden. Violations oblige to compensation. All rights reserved in the event of a patent or utility model protection. Subject to change without notice! Is NOT subject to change service!

General tolerances  
DIN ISO 2768-mH

Projection mode



Revision	Date	All measures in
B	25.06.25	mm

Part no.

**S900554**

### Description

## LF PowerPlus 2.0 Bolt

