

General

Productgroup	LF PowerPlus
Mounting type	Massive Pressfit Techn
Material	Lead-free Brass
Surface	tin
Customs tariff number	85369095
Country of origin	Federal Republic of Germany
Weight per piecs ~	0.030000 kg

Technical data

Terminal / Type	Bush through hole / Metric
Thread/Diameter x Length	6.000 mm x 3.50 mm
Torque	5.90 Nm

Socket length x Socket width	12.400 mm x 12.40 mm
Socket height	10.25 mm
Height total	15.25 mm
Height over pcb	10.25 mm
No. of Pins	12
Pin length	5.00 mm
Grid dimension X / Y	2.80 mm / 2.80 mm
Pin alignment	Circumference

Processing

Press in force	720 N up to 3000 N
Retention force	60-80 % of press-in force
Press-in speed	100 mm/min. up to 250 mm/min.
PCB thickness	1.60 mm up to 3.20 mm
Notice	

Current carrying capacity

Part (20 °C) ~ / (85 °C) ~	270.000 A / 155.000 A
----------------------------	-----------------------

Usage and storage

Temperature	-40 °C up to +150 °C
Storage	dry environment protected from weather conditions
Storage conditions	at +5 °C up to +40 °C, 75% RH, non-condensing

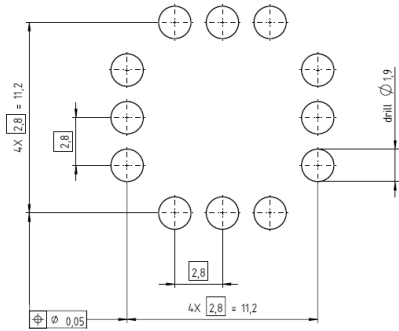
Accessories

Press in tool	Press-Fit tool bolt, for PowerPlus 2.0 bush M6
---------------	--

Co-applicable documents

Powerelement Guidelines	Link to Powerelement Guidelines
-------------------------	---------------------------------

Standard drill pattern

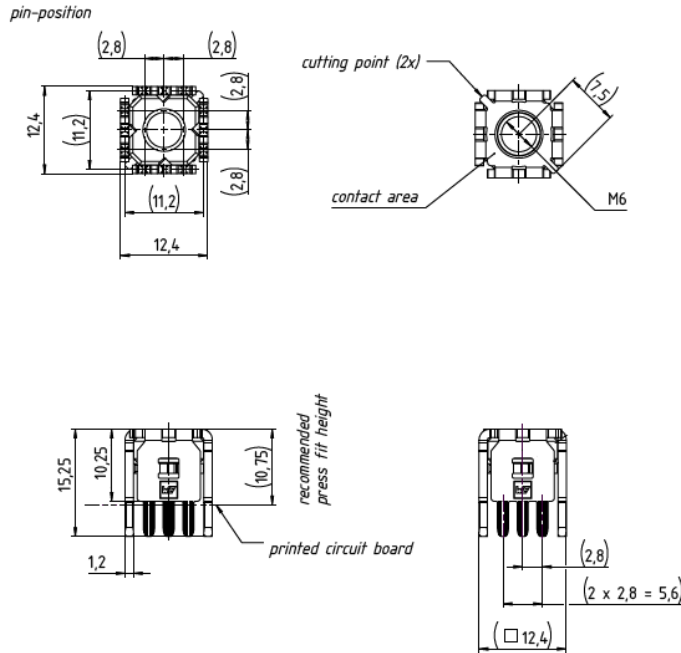


Drill hole specification for PCB

Drill Ø		drill tool	1,90 mm
		drill hole	1,90 mm – 0,025 mm
Cu		Cu – in Hole	Average 30 µm – 60 µm min. 25 µm, max. 80 µm *
End Ø		HAL chem. surfaces	(1,750 mm +/- 0,05 mm) (1,775 mm +/- 0,05 mm)
Note: For Press-fit Technology drill diameter and copper thickness are fix. End Ø for reference only.			

* single measurement points in microsection

Dimensions



Press-fit-tool information



**WÜRTH
ELEKTRONIK**
MORE THAN
YOU EXPECT

Würth Elektronik ICS GmbH & Co. KG
Würthstraße 1 74676 Niedernhall, Germany
P +49 7940 9810-4444 lf-powerelement@we-online.de
www.lf-powerelements.com

Observe protective note ISO 16016. Passing on or duplication without previous written agreement forbidden. Violations oblige to compensation. All rights reserved in the event of a patent or utility model protection. Subject to change without notice! Is NOT subject to change service!

General tolerances

DIN ISO 2768-mH

Projection mode



Revision	Date	All measures in
B	25.06.25	mm

Part no.

S900555

Description

LF PowerPlus 2.0 Bush

