

General

Productgroup	LF PowerPlus
Mounting type	Massive Pressfit Techn
Material	Lead-free Brass
Surface	tin
Customs tariff number	85369095
Country of origin	Federal Republic of Germany
Weight per piëcs ~	0.012000 kg

Technical data

Terminal / Type	Bush through hole / Metric
Thread/Diameter x Length	8.000 mm x 4.50 mm
Torque	16.00 Nm

Socket length x Socket width	15.400 mm x 15.40 mm
Socket height	12.00 mm
Height total	17.00 mm
Height over pcb	12.00 mm
No. of Pins	16
Pin length	5.00 mm
Grid dimension X / Y	2.84 mm / 2.84 mm
Pin alignment	Circumference

Processing

Press in force	960 N up to 4000 N
Retention force	60-80 % of press-in force
Press-in speed	100 mm/min. up to 250 mm/min.
PCB thickness	1.60 mm up to 3.20 mm
Notice	

Current carrying capacity

Part (20°C) ~ / (85°C) ~ 360.000 A / 200.000 A

Usage and storage

Temperature	-40 °C up to +150 °C
Storage	dry environment protected from weather conditions
Storage conditions	at +5 °C up to +40 °C, 75% RH, non-condensing

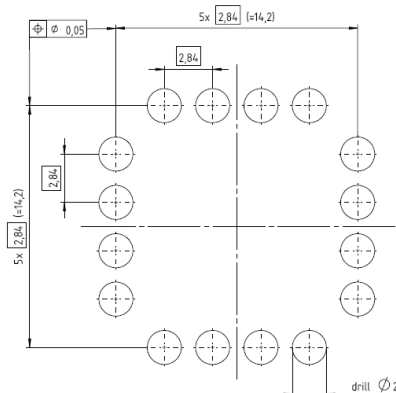
Accessories

Press in tool Press-Fit tool bolt, for PowerPlus 2.0 bush M8

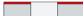

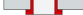
Co-applicable documents

Powerelement Guidelines [Link to Powerelement Guidelines](#)

Standard drill pattern

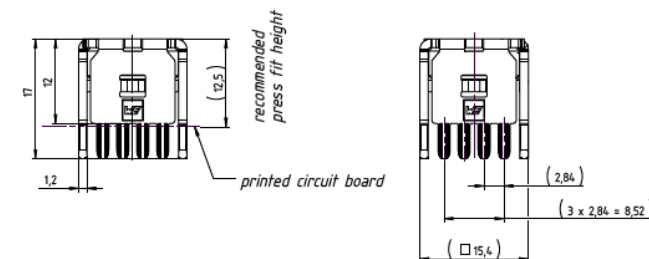
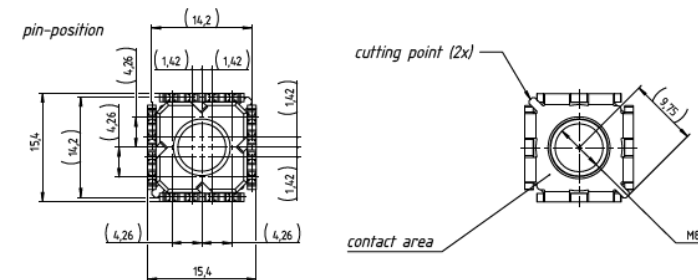


Drill hole specification for PCB

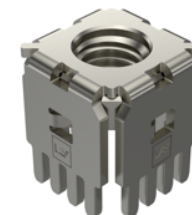
Drill Ø		drill tool drill hole	2,00 mm 2,00 mm – 0,025 mm
Cu		Cu – in Hole	Average 30 µm – 60 µm min. 25 µm, max. 80 µm *
End Ø		HAL chem. surfaces	(1,850 mm +/- 0,05 mm) (1,875 mm +/- 0,05 mm)
Note:	For Press-fit Technology drill diameter and copper thickness are fix. End Ø for reference only.		

* single measurement points in microsection

Dimensions



Press-fit-tool information



**WÜRTH
ELEKTRONIK**
MORE THAN
YOU EXPECT

Würth Elektronik ICS GmbH & Co. KG
Würthstraße 1 74676 Niedernhall, Germany
P +49 7940 9810-4444 lf-powerelement@we-online.de
www.lf-powerelements.com

Observe protective note ISO 16016. Passing on or duplication without previous written agreement forbidden. Violations oblige to compensation. All rights reserved in the event of a patent or utility model protection. Subject to change without notice! Is NOT subject to change service!

General tolerances
DIN ISO 2768-mH

Projection mode



Revision	Date	All measures in
B	25.06.25	mm

Part no.

S900558

Description

LF PowerPlus 2.0 Bush

