

### General

Productgroup	LF PowerBasket
Mounting type	Massive Pressfit Techn
Material	Polyamide
Surface	without
Customs tariff number	85369095
Country of origin	Federal Republic of Germany
Weight per piecs ~	0.007000 kg

### Technical data

Terminal / Type	Bush through hole / Diameter
Diameter	5.400 mm
Socket diameter	15.200 mm
Socket height	18.00 mm
Height total	23.00 mm
Height over pcb	18.00 mm
No. of Pins	10
Pin length	5.00 mm
Pin alignment	Full plain

### Processing

Press-in speed for press-fit types	100 up to 250
PCB thickness for SMT types	min. 1.00 mm
PCB thickness for press-fit types	1,60 up to 3,20 mm
Notice	

### Current carrying capacity

Part (20°C) ~ / (85°C) ~	110.000 A / 60.000 A
--------------------------	----------------------

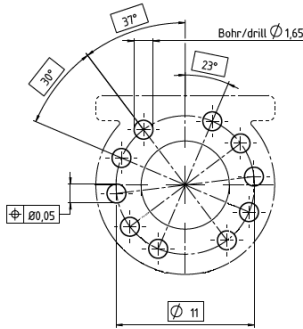
### Usage and storage

Temperature	-40°C up to +150°C
Storage	dry environment protected from weather conditions
Storage conditions	at +5°C up to +40°C, 75% RH, non-condensing

### Co-applicable documents

Powerelement Guidelines	Link to Powerelement Guidelines
-------------------------	---------------------------------

### Footprint recommendation

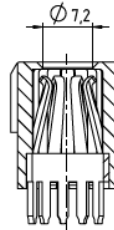
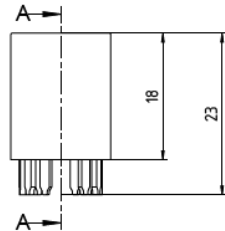
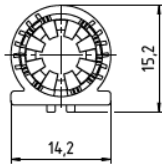


### Drill hole specification for PCB or recommendation mask design

Drill Ø		drill tool	1,65 mm
		drill hole	1,65 mm – 0,03 mm
Cu		Cu – in Hole	Average 30 µm – 60 µm min. 25 µm, max. 80 µm *
End Ø		HAL	(1,505 mm +/- 0,05 mm)
		chem. surfaces	(1,530 mm +/- 0,05 mm)
<b>Note:</b> For Press-fit Technology drill diameter and copper thickness are fix. End Ø for reference only.			

\* single measurement points in microsection

### Dimensions



**WÜRTH  
ELEKTRONIK**  
MORE THAN  
YOU EXPECT

Würth Elektronik ICS GmbH & Co. KG  
Würthstraße 1 74676 Niedernhall, Germany  
P +49 7940 9810-4444 lf-powerelement@we-online.de  
www.lf-powerelements.com

Observe protective note ISO 16016. Passing on or duplication without previous written agreement forbidden. Violations oblige to compensation. All rights reserved in the event of a patent or utility model protection. Subject to change without notice! Is NOT subject to change service!

General tolerances

DIN ISO 2768-mH

Projection mode



Revision

Date

All measures in

G

10.07.25

mm

Part no.

**S95746**

Description

**PowerBasket with housing Press-Fit  
Bush vertical through hole**



**RoHS  
COMPLIANT**  
**LEAD-FREE**  
Pb < 0,1 %