

### General

|                       |                             |
|-----------------------|-----------------------------|
| Productgroup          | LF PowerBasket              |
| Mounting type         | Flexible Pressfit Techn     |
| Material              | Polyamide                   |
| Surface               | without                     |
| Customs tariff number | 85369095                    |
| Country of origin     | Federal Republic of Germany |
| Weight per piecs ~    | 0.001400 kg                 |

### Technical data

|                 |                              |
|-----------------|------------------------------|
| Terminal / Type | Bush through hole / Diameter |
| Diameter        | 3.000 mm                     |
| Socket diameter | 9.000 mm                     |
| Socket height   | 16.00 mm                     |
| Height total    | 19.30 mm                     |
| Height over pcb | 16.00 mm                     |
| No. of Pins     | 5                            |
| Pin length      | 3.30 mm                      |
| Pin alignment   | Circumference                |

### Processing

|                                    |                    |
|------------------------------------|--------------------|
| Press-in speed for press-fit types | 100 up to 250      |
| PCB thickness for SMT types        | min. 1.00 mm       |
| PCB thickness for press-fit types  | 1,60 up to 3,20 mm |
| Notice                             |                    |

### Current carrying capacity

|                            |                     |
|----------------------------|---------------------|
| Part (20 °C) ~ / (85 °C) ~ | 75.000 A / 45.000 A |
|----------------------------|---------------------|

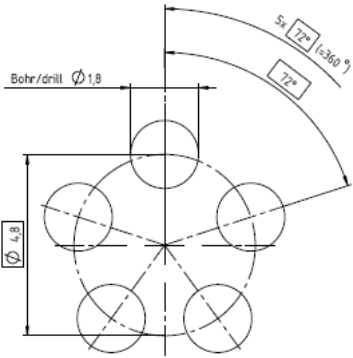
### Usage and storage

|                    |   |
|--------------------|---|
| Temperature        | -40 °C up to +150 °C                              |
| Storage            | dry environment protected from weather conditions |
| Storage conditions | at +5 °C up to +40 °C, 75% RH, non-condensing     |

### Co-applicable documents

|                         |                                 |
|-------------------------|---------------------------------|
| Powerelement Guidelines | Link to Powerelement Guidelines |
|-------------------------|---------------------------------|

### Footprint recommendation

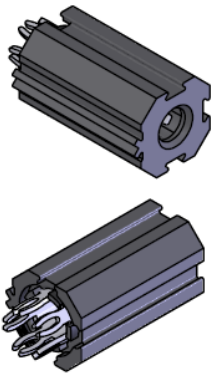
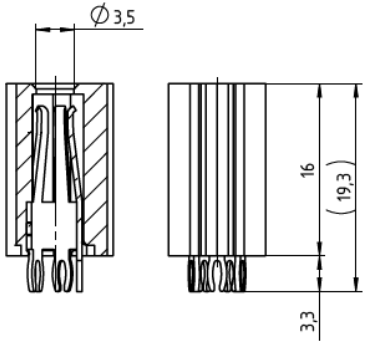
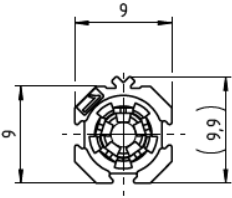


### Drill hole specification for PCB or recommendation mask design

|         |   |                |   |
|---------|---|----------------|---|
| Drill Ø |   | drill tool     | 1,80 mm   |
|         |   | drill hole     | 1,80 mm – 0,025 mm                                |
| Cu      |   | Cu – in Hole   | Average 30 µm – 60 µm<br>min. 30 µm, max. 80 µm * |
| End Ø   |   | HAL            | (1,650 mm +/- 0,05 mm)                            |
|         |   | chem. surfaces | (1,675 mm +/- 0,05 mm)                            |
| Note:   | For Press-fit Technology drill diameter and copper thickness are fix. End Ø for reference only. |                |   |

\* single measurement points in microsection

### Dimensions



**WÜRTH  
ELEKTRONIK**  
MORE THAN  
YOU EXPECT

Würth Elektronik ICS GmbH & Co. KG  
Würthstraße 1 74676 Niedernhall, Germany  
P +49 7940 9810-4444 lf-powerelement@we-online.de  
www.lf-powerelements.com

Observe protective note ISO 16016. Passing on or duplication without previous written agreement forbidden. Violations oblige to compensation. All rights reserved in the event of a patent or utility model protection. Subject to change without notice! Is NOT subject to change service!

General tolerances  
DIN ISO 2768-mH

Projection mode



|          |          |                 |
|----------|----------|-----------------|
| Revision | Date     | All measures in |
| D        | 10.07.25 | mm              |

Part no.

**S98050**

Description

**LF PowerBasket with housing Press-  
Fit Bush vertical through hole**



**RoHS  
COMPLIANT**  
**LEAD-FREE**  
Pb < 0,1 %